

TITMUS*i*200™
TITMUS*i*250™



P R E M I U M V I S I O N S C R E E N I N G



TITMUSi250[™]
Premium Vision Screening

TITMUSi200[™]
Premium Vision Screening

The Next Generation of Premium Vision Screening

As the manufacturer of the preferred vision screening instrument for visual health professionals, TITMUS introduces the latest in innovation with the TITMUSi250 vision screening instrument. This new instrument features an ergonomic design for patient comfort, built-in membrane switches for operation, standardized fluorescent test illumination, and an integrated foldable handle for ease-of-transport.

The contemporary compact design and added ergonomic features make the TITMUSi250 more efficient and easier to operate, while maintaining the recognized tradition of quality, durability, and ease-of-use that made TITMUS the industry standard. The TITMUSi250 is the screener of choice for the next generation.

The TITMUSi200 is the TITMUSi250 instrument without the capability to test peripheral vision.

Innovative Design

Designed to meet the unique needs of the 21st century, the TITMUSi250 introduces several new features making it more user-friendly and the clear choice for consistent and dependable performance. With over 50 years' experience, TITMUS continues to deliver the best instrument possible, emphasizing accuracy in the testing of visual performance in adults and children.

The TITMUSi250 features a new ergonomic design that incorporates the unique TITMUSComfort™ height adjustment to easily accommodate adults and children of varying heights. The TITMUSi250 has a manual wheel to advance test slides and includes built-in membrane switches to occlude each eye and control peripheral vision test lights.

The TITMUSi250 incorporates a new fluorescent light source that significantly improves slide illumination, closely replicating actual daylight conditions and providing true color testing. The fluorescent light source will give years of extended service and is placed in a module designed for easy replacement. This improvement, in conjunction with newly redesigned test slides, provides the most reliable test results available.

Designed with a foam headrest that can be easily cleaned, the need for messy replacement tissues is eliminated. The TITMUSi250 features an integrated foldable handle and comes with an optional soft-sided carrying case, making the delivery of vision screening services highly portable and effortless.

TITMUSi250™ Vision Screener With Built-In Switches



Patent Pending

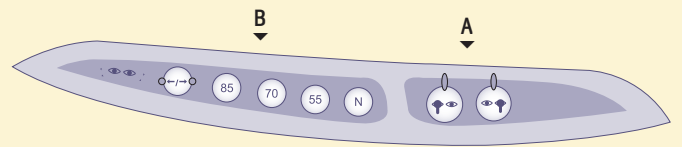
Other Special Features Include:
• TITMUSComfort™ height adjustment

TITMUSComfort™ Height Adjustment



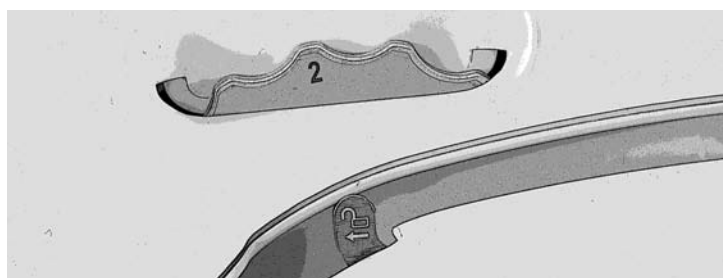
The TITMUSComfort™ height adjustment is designed for patient comfort, to accommodate both children and adults, either standing or seated.

TITMUSi250™, Built-In Membrane Switches



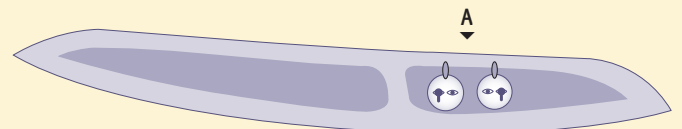
A ▶ Occlude each eye, light indicates eye being tested.
B ▶ Peripheral vision screening.

Drum Advance/Reverse



Manual wheel to advance/reverse the test slide drum. Number on wheel indicates test slide position.

TITMUSi200™, Built-In Membrane Switches

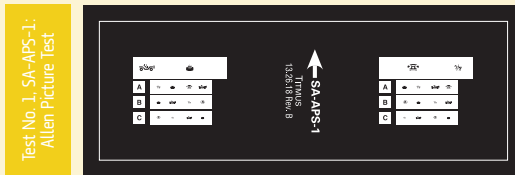


A ▶ Occlude each eye, light indicates eye being tested.

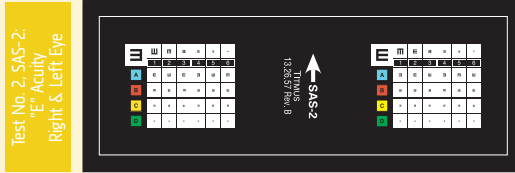
Slides For TITMUSi250™ / TITMUSi200™ Vision Screener

Slides for Professional Model

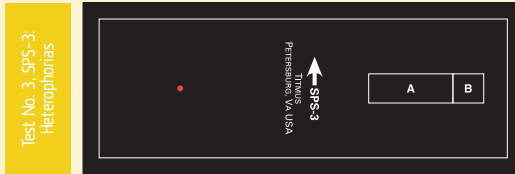
USED BY: Family Physicians; General Practitioners; Pediatricians
 FOR: Screening adults and children
 AGE GROUP: School-aged children, adults of all ages
 Other test slide sets are available



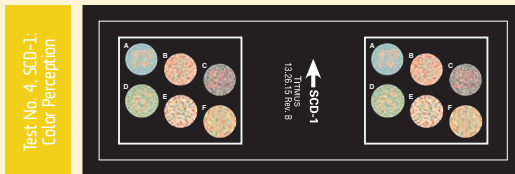
Line 1—Binocularity—tests performance of both eyes together. Lines 2, 3, 4—Acuity—Right & Left Eyes. Calibrated 20/30, 20/40 & 20/50.



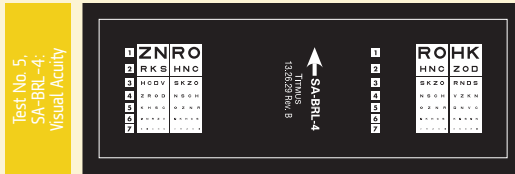
Conventional Tumbling "E" symbol. Child states which way the "E" points. Acuity levels of 20/20, 20/30, 20/40 & 20/50.



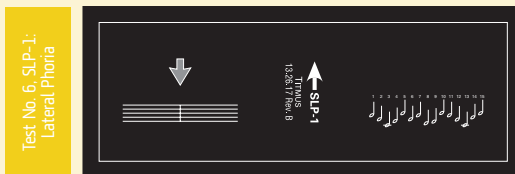
Muscle balance, vertical and lateral is tested at predetermined pass/fail levels.



Consists of six accurately reproduced Ishihara Pseudo-Isochromatic plates. Detects color deficiency but does not classify.



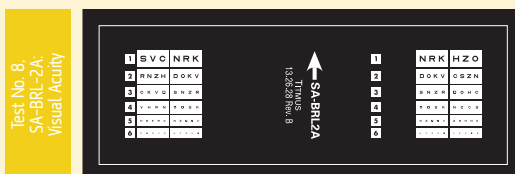
Results calibrated at 20/20, 20/30, 20/40, 20/50, 20/70, 20/100 & 20/200. Tests can be administered binocularly or for each eye.



Measures horizontal muscle balance in 1 prism diopter steps.



Measures vertical muscle balance in 0.5 prism diopter steps.



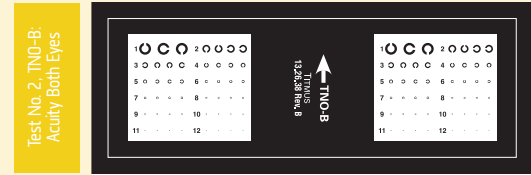
Results calibrated at 20/20, 20/30, 20/40, 20/50, 20/70 & 20/100. Tests can be administered binocularly or for each eye.

Slides for Occupational Model

USED BY: Occupational Health Nurses; Clinics; General Practitioners
 FOR: Screening vision for various job functions
 AGE GROUP: Adults of all ages
 Other test slide sets are available



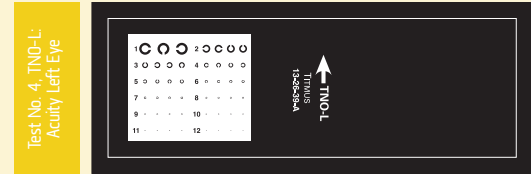
To determine whether both eyes are being used together.



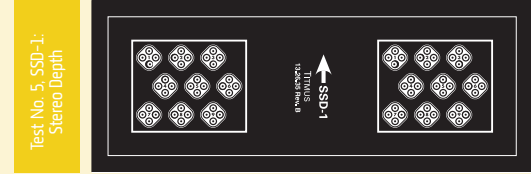
This pattern of Landolt rings provides a precise measure of acuity with literates or illiterates. The direction of the opening in the ring is to be identified.



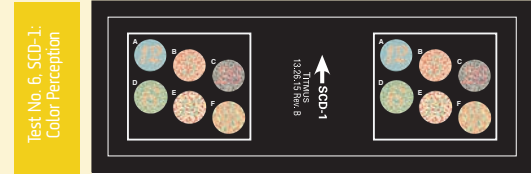
Similar to Both Eyes Test with different directions and image omitted for the Left Eye.



Similar to Both Eyes Test with different directions and image omitted for the Right Eye.



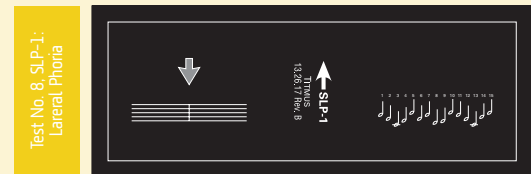
Is a precise measure of one of the important factors of depth perception. It provides an excellent measure of binocular skill.



Consists of six accurately reproduced Ishihara Pseudo-Isochromatic plates. Detects color deficiency but does not classify.



Measures vertical muscle balance in 0.5 prism diopter steps.



Measures horizontal muscle balance in 1 prism diopter steps.

TITMUSi250™/TITMUSi200™ Features



Appearance

Modern, sleek, contoured design in contemporary colors.

Ergonomics

The TITMUSi250/TITMUSi200 instrument incorporates a unique TITMUSComfort™ height adjustment feature that accommodates adults and children of varying heights. This feature ensures that, regardless of whether patients are seated or standing, they are in a comfortable position for testing. This is essential for efficient and accurate testing.

Built-In Membrane Switches

With the TITMUSi250/TITMUSi200, test administration is effortless with the use of the sensitive membrane keys. The instrument has a manual wheel to advance test slides and includes built-in membrane switches to occlude each eye and control peripheral vision test lights.

Portability

The TITMUSi250/TITMUSi200 instrument is designed with an integrated foldable handle for ease-of-transport. It also features a side storage pocket to hold accessories and record forms.

New Light Source

The TITMUSi250/TITMUSi200 instrument meets the ANSI and ISO standards for illumination using a true white light source to give years of extended service. The light module has a warranty of three (3) years.

Foam Headrest

The TITMUSi250/TITMUSi200 instrument is designed with a new soft foam headrest to provide proper head positioning and comfortable support. The foam headrest can easily be cleaned using a disinfectant solution.

Peripheral Vision Testing

The TITMUSi250 instrument can perform peripheral vision testing in the horizontal visual field at 85°, 70°, 55° and nasal 45° for each eye. This feature is not included on the TITMUSi200.

Available Tests

A variety of tests are available for the TITMUSi250/TITMUSi200 instrument to screen for visual acuity, muscle balance (horizontal and vertical phoria), depth perception, color perception, and binocular vision.

Intermediate or Plus Lenses (Optional)

Five additional lenses are available for the TITMUSi250/TITMUSi200 to identify vision problems at intermediate distances of 19, 22, 26, 32 and 40 inches (50, 57, 67, 80 and 100 cm). These lenses provide comprehensive vision screening at the actual working distance from the eye. Plus lenses with values of +1.00, +1.50, +1.75 and +2.25 are also available for testing children's vision.

Carrying Case (Optional)

An optional soft-sided carrying case with wheels and collapsible handle is available for the TITMUSi250/TITMUSi200.

Warranty, Accessories, Standards and Technical Data

Warranty

The TITMUSi250/TITMUSi200 has a warranty for a period of three (3) years against defects in materials and workmanship from date of purchase. Warranty includes the light module.

Standard Accessories

- 8 Test Slides made from high grade photographic film sealed between optical-quality glass
- Training Manual (technical support available via the internet)
- Record Forms – pad of 100 forms to record test results
- 10 Lens Cleaning Wipes
- Package of three (3) Fog Eliminator Cloths
- Accessory Case for storing lens cleaning wipes, fog eliminator cloths, and lenses
- Dust Cover for instrument storage

Optional Accessories

- Carrying Case – soft-sided, ergonomically designed with wheels, for easy transport of vision screener
- Intermediate Lenses – 19, 22, 26, 32 and 40 inches (50, 57, 67, 80 and 100 cm)
- Plus Lenses with values of +1.00, +1.50, +1.75 and +2.25 are available for testing children's vision

Electrical Standards

The TITMUSi250/TITMUSi200 meets the CE, UL, and CSA Standards

Europe: EN 55011 Group 1, Class A
EN 60601-2
IEC 601-1-2

USA: UL 2601-1, 1st Ed. Category 355

Canada: CSA-C22.2, No. 601.1-M90, Category 245
Class 1 Device

Technical Data

Power Supply: 110-240 VAC, 0.4-0.2 A, 50/60 Hz

Fuse Rating: 2 A, 250 V

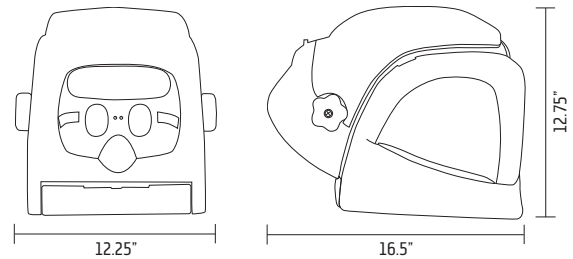
Illumination: As per ISO 8596 and ANSI Z80.21 Standards

Dimensions: W X L X H units
12.25 X 16.5 X 12.75 inches (closed condition)
31 X 42 X 32 cm (closed condition)

Weight: 18 lbs/ 8.5 kg

Temperature: +50°F to +100°F (+10°C to +40°C)

Humidity: 30% to 75%



TITMUSiSeries Model Comparison

Model Features	i500	i400	i250	i200
Touch-Screen Control Panel with Software	•			
Membrane Control Panel		•		
Built-In Membrane Switches			•	•
Natural Line-of-Sight Testing	•	•		
Ergonomics (TitmusComfort™ Height Adjustment)	•	•	•	•
New Fluorescent Light Source	•	•	•	•
Portability	•	•	•	•
Soft Foam Headrest	•	•	•	•
Head Positioning Sensor	•	•		
Peripheral Vision Testing	•	•	•	
Test Slide Advance/Reverse	automatic	automatic	manual	manual
Night Vision Testing	•	•		
Carrying Case (soft-sided)	optional	optional	optional	optional
Standard Accessories	•	•	•	•

©2007 TITMUS Optical, Inc. All rights reserved.

INL0703
Q1000.02.07.WHA

TITMUS[®]
www.titmusseries.com

690 HP Way, Chester, VA 23836
800-446-1802 P
804-530-0568 F
info@titmus.com Email

Distributed by:

Bacou-Daloz